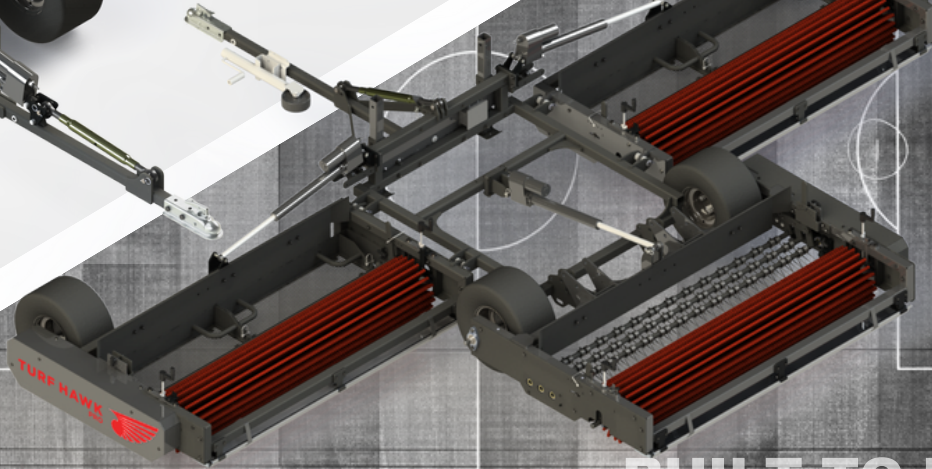
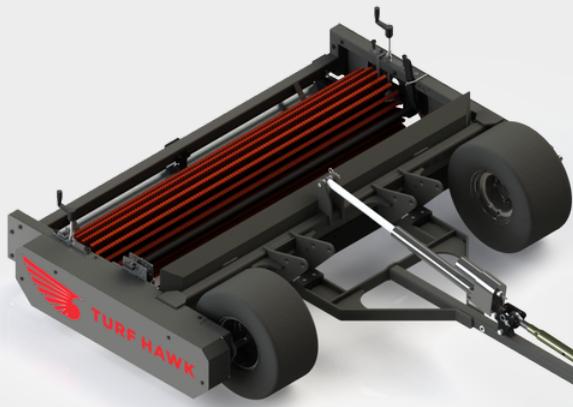


TURF HAWK



BUILT TO LAST
ENGINEERED TO DRIVE RESULTS



FI Equipment has an **extensive distribution network** that is ready to serve **you**. See our website for our list of **dealers**.



The Turf Hawk™ is a pull-type machine line up that was designed to reduce time spent grooming while enhancing the quality of both natural and artificial turf surfaces. The machines provide up to **3 essential grooming tools** for single pass efficiency, including; **rotary brushes, magnet bars, debris collectors** or **spring tines**. Proven to be more effective at decompacting artificial turf than traditional drag brushes, the Turf Hawk's rotary brushes maintain an optimal surface hardness to enhance player safety. Use the Turf Hawk Pro to triple the working width to improve efficiency and reduce event turnover time.

PRODUCT SPECIFICATIONS

TURF HAWK

TURF HAWK PRO

Brush Working Width	5' 4" (1.63 m)	15' 6" (4.72 m)
Ideal Working Speed	6 mph (10 km/h)	
Transport Speed	12 mph (20 km/h)	
Approx. Weight	575 lbs (250 kg)	1350 lbs (612 kg)
Vehicle Requirements	12 V Battery	
	10 HP	20 HP
Towing Capacity	200 lbs (91 kg)	600 lbs (272 kg)



CONTACT US

SALES@FIEQUIPMENT.COM

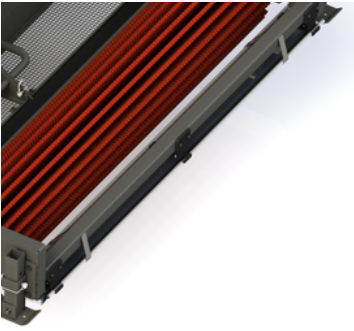


VISIT OUR WEBSITE

WWW.FIEQUIPMENT.COM

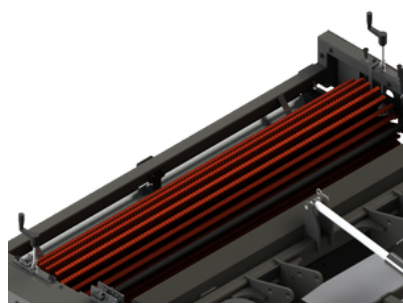


PRODUCT FEATURES



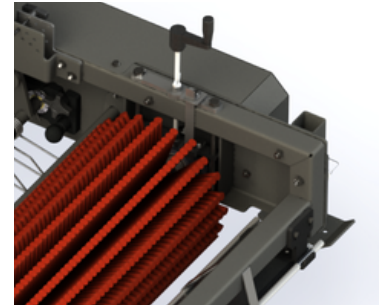
1. MAGNET BAR

67" QUICK CLEAN RARE EARTH MAGNET BAR



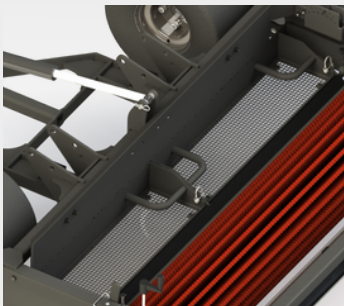
2. ROTARY BRUSH

GROUND DRIVEN BRUSH FOR CONSISTENT PERFORMANCE



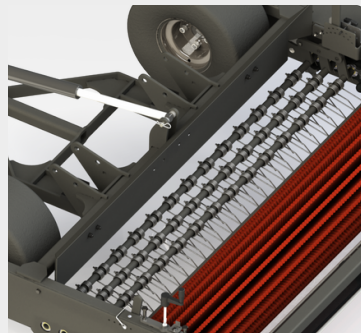
3. BRUSH DEPTH

INDEPENDENT BRUSH HEIGHT ADJUSTMENT



4. DEBRIS COLLECTOR

DUAL REMOVABLE BASKETS USED TO FILTER OUT UNWANTED DEBRIS



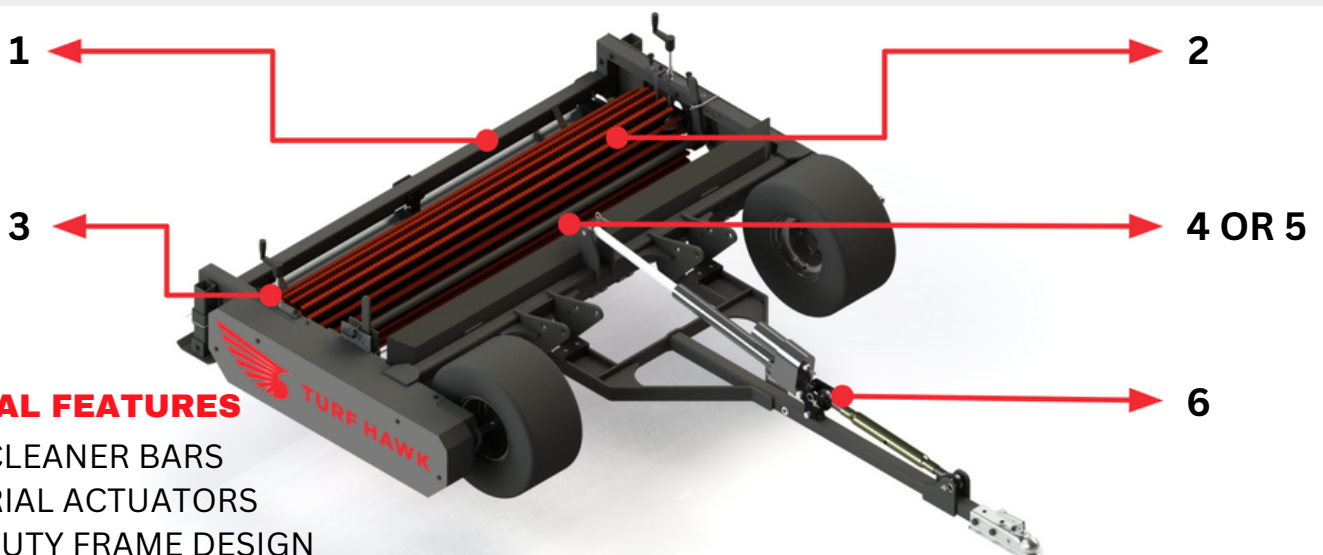
5. SPRING TINES (OPTION)

INTERCHANGABLE TINES FOR AGGRESSIVE DECOMPACTION AND DETHATCHING



6. ADJUSTABLE HITCH

ACCOMMODATES VARIOUS TOW VEHICLES FOR PRECISE FIELD LEVELLING



ADDITIONAL FEATURES

- BRUSH CLEANER BARS
- INDUSTRIAL ACTUATORS
- HEAVY DUTY FRAME DESIGN



CONTACT US

SALES@FIEQUIPMENT.COM



VISIT OUR WEBSITE

WWW.FIEQUIPMENT.COM

