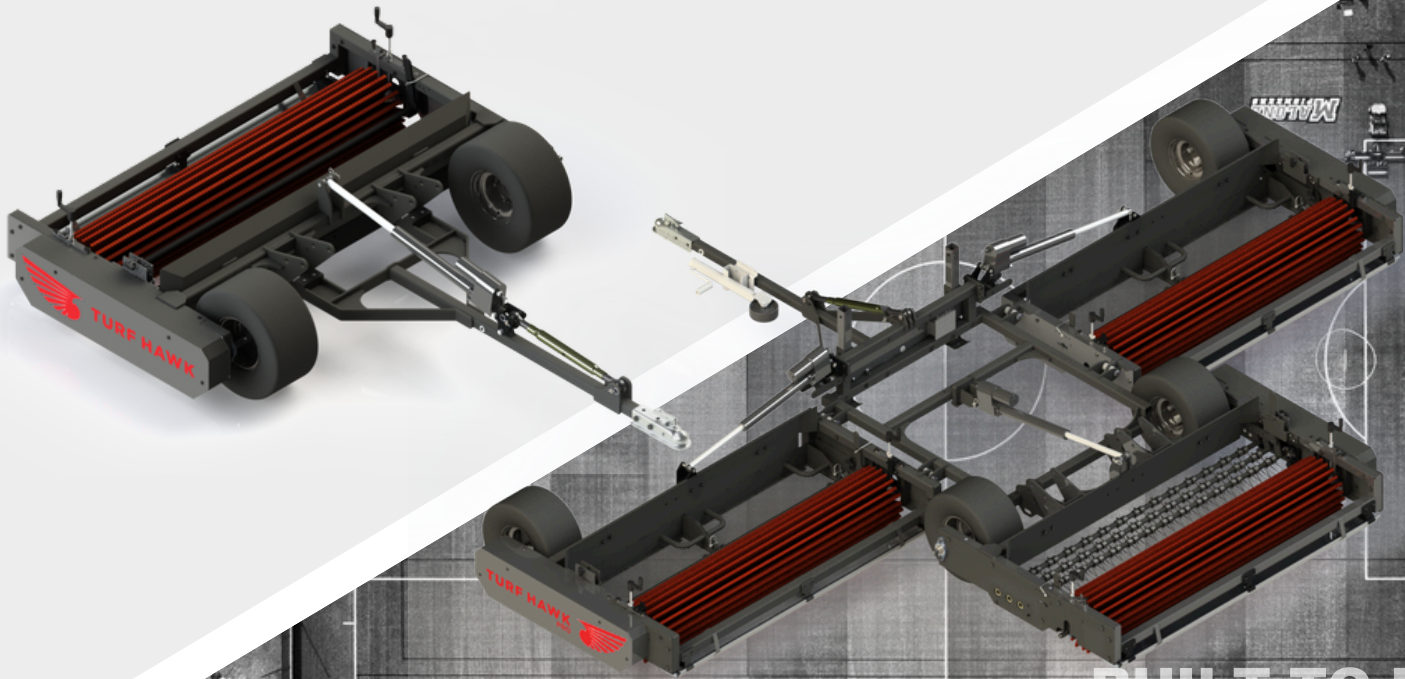


# TURF HAWK



**BUILT TO LAST  
ENGINEERED TO DRIVE RESULTS**

FI Equipment is an innovative Canadian turf equipment manufacturer providing quality & practical products that improve your maintenance practices from day 1.



The Turf Hawk™ series is a pull-type machine lineup that was designed to reduce time spent grooming while enhancing the quality of turf surfaces. The machines provide up to **3 essential grooming tools** for single pass efficiency, including; **rotary brushes, magnet bars, debris collectors** or **spring tines**. Proven to be more effective at decompacting artificial turf than traditional drag brushes, the Turf Hawk's rotary brushes maintain an optimal surface hardness to enhance player safety. The Turf Hawk Pro triples the working width to improve efficiency and drastically reduce event turnover time.

## PRODUCT SPECIFICATIONS

	TURF HAWK	TURF HAWK PRO
Brush Working Width	5' 4" (1.63 m)	15' 6" (4.72 m)
Ideal Working Speeds	3 - 6 mph (5 - 10 km/h)	
Transport Speed	12 mph (20 km/h)	
Approx. Weight	575 lbs (250 kg)	1350 lbs (612 kg)
Vehicle Requirements	12 V Battery	
	10 HP	20 HP
Towing Capacity	200 lbs (91 kg)	600 lbs (272 kg)



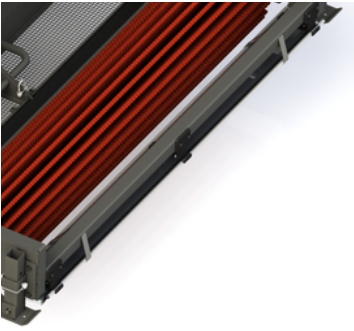
**CONTACT US**  
SALES@FIEQUIPMENT.COM



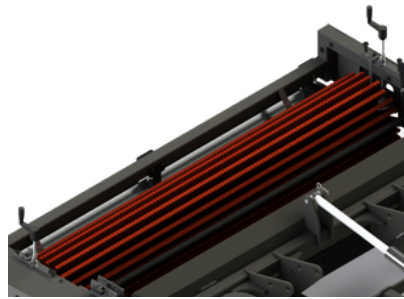
**VISIT OUR WEBSITE**  
WWW.FIEQUIPMENT.COM



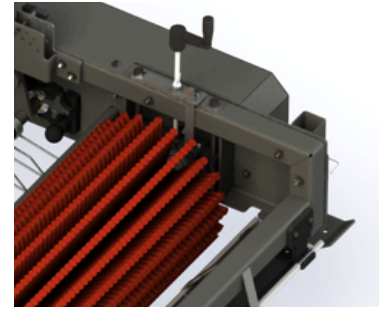
# PRODUCT FEATURES



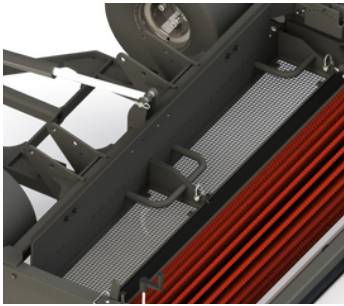
**1. MAGNET BAR**  
67" QUICK CLEAN  
MAGNET BAR



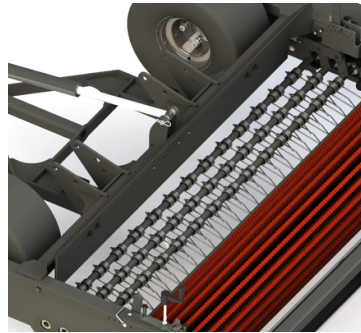
**2. ROTARY BRUSH**  
GROUND DRIVEN BRUSH FOR  
CONSISTENT PERFORMANCE



**3. BRUSH DEPTH**  
INDEPENDENT BRUSH  
HEIGHT ADJUSTMENT



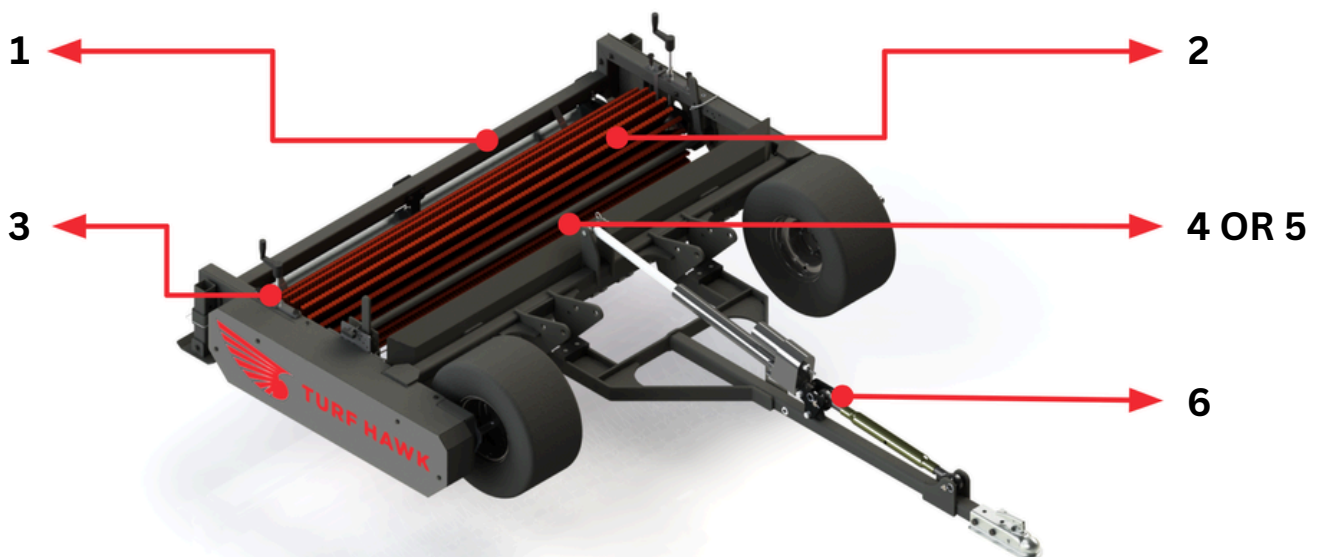
**4. DEBRIS COLLECTOR**  
DUAL REMOVABLE BASKETS  
USED TO FILTER OUT  
UNWANTED DEBRIS



**5. SPRING TINES (OPTION)**  
INTERCHANGABLE TINES FOR  
AGGRESSIVE DECOMPACTION  
AND DETHATCHING



**6. ADJUSTABLE HITCH**  
ACCOMMODATES VARIOUS  
TOW VEHICLES FOR PRECISE  
FIELD LEVELLING



**CONTACT US**  
SALES@FIEQUIPMENT.COM



**VISIT OUR WEBSITE**  
WWW.FIEQUIPMENT.COM

